


Round and flat PVC ducting



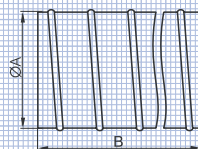
Approved Distributor :

 주식회사 태성
TEL : 02-525-6836
FAX : 02-525-6838



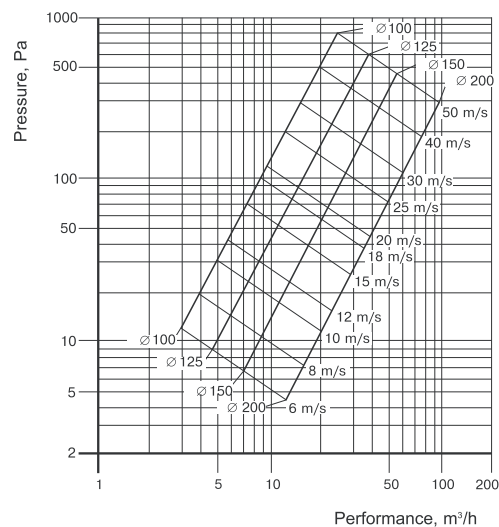
Flexible duct

- wire spiral frame provides flexibility and strength
- easy mounting with the help of clamps of proper diameter
- manufactured from flame-proof PVC-coated fabric



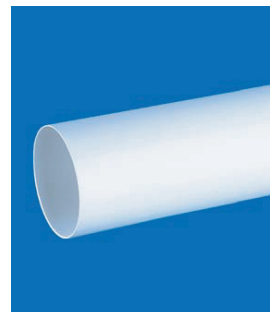
Code	A	B	Code	A	B
1010/3	100mm	1000	3030/3	150mm	3000
2010/3	125mm	1000	1060/3	100mm	6000
3010/3	150mm	1000	2060/3	125mm	6000
1030/3	100mm	3000	3060/3	150mm	6000
2030/3	125mm	3000	10150/3	100mm	15000

Pressure lost diagram of extended duct per 1 m



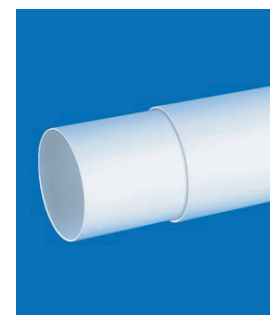
DUCTING K 100/125/150/200

100/125/150/200



Round Duct

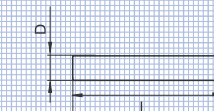
Code	D	L	Code	D	L
10035/1	100mm	350	10035/2	103mm	350
20035/1	125mm	350	20035/2	126mm	350
30035/1	150mm	350	1005/2	103mm	500
40035/1	200mm	350	2005/2	126mm	500
1005/1	100mm	500	1010/2	103mm	1000
2005/1	125mm	500	2010/2	126mm	1000
3005/1	150mm	500	1015/2	103mm	1500
4005/1	200mm	500	2015/2	126mm	1500
1010/1	100mm	1000	1020/2	103mm	2000
2010/1	125mm	1000	2020/2	126mm	2000
3010/1	150mm	1000	1025/2	103mm	2500
4010/1	200mm	1000	2025/2	126mm	2500
1015/1	100mm	1500			
2015/1	125mm	1500			
3015/1	150mm	1500			
4015/1	200mm	1500			
1020/1	100mm	2000			
2020/1	125mm	2000			
3020/1	150mm	2000			
4020/1	200mm	2000			
1025/1	100mm	2500			
2025/1	125mm	2500			
3025/1	150mm	2500			
4025/1	200mm	2500			



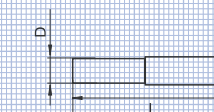
Telescope

- ☒ the length of the channel is variable in the diapason

Code	D	L
1805	100mm	350-500
2805	125mm	350-500
1810	100mm	500-1000
2810	125mm	500-1000



5/10

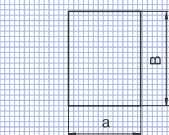



10




Flexible Duct Connector

Code	a	B
1113	60	100
2123	60	125
3133	60	150
4143	60	200


 20/15/10

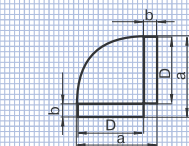


Connector

Code	a	b	D
111	62	30	100
212	62	30	125
313	62	30	150
414	62	30	200


 20/16/28/20

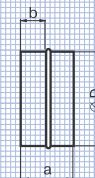

Elbow

Code	a	b	∅ D
121	137	30	100mm
222	164	30	125mm
323	188	30	150mm
424	223	30	200mm


 22/14/8/5

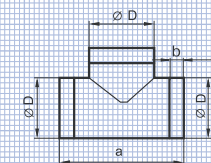


Connector with back valve

Code	a	b	D
1111	62	30	100
2121	62	30	125
3131	62	30	150
4141	62	30	200


 20/16/28/20

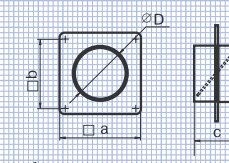
T-joint

Code	a	b	∅ D
131	173	30	100mm
232	198	30	125mm
333	260	50	150mm
434	312	50	200mm


 22/18/8/5

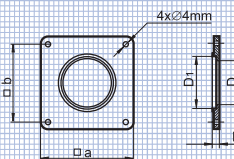

Connector with back valve and plate

Code	a	b	c	D
1511	150	134	62	100
2521	170	154	62	125
3531	204	188	62	150
4541	284	268	62	200


 26/24/14/18

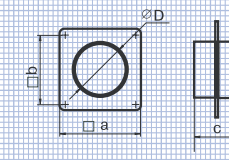

Wall plate

Code	D	D1	h	a	b
15	100,5	103	3	150	134
25	125	127	3	170	154
35	148	151	3	204	188
45	201	204	3	284	268



Connector with plate

Code	a	b	c	D
151	150	134	62	100
252	170	154	62	125
353	204	188	62	150
454	284	268	62	200


 26/24/14/14



Reducer

Code	a	D1	D2
211	60	100	125
312	60	125	150
413	60	150	200

Reducer

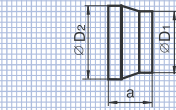
Code	a	D1	D2
216	42	120	129

Reducer

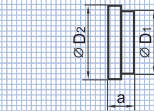
Code	Ø
310	80 - 100 - 120 - 125 - 150

Flat-to-round adaptor

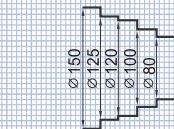
Code	B	D	L	a	b
511	55x110	100	137	30	30
711	60x120	100	120	30	30
812	60x204	125	204	30	30



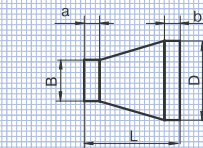
60/55/40



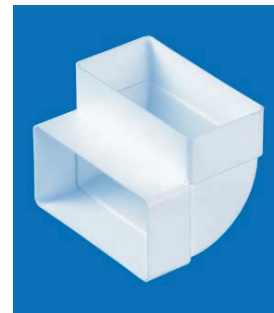
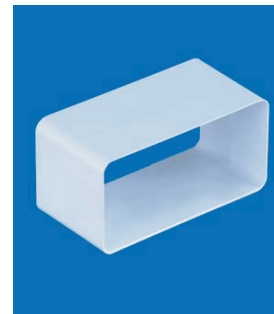
60



25



26/20/20



Flat Duct

Code	A	L	Code	A	L
50035/1	55x110	350	5015/1	55x110	1500
70035/1	60x120	350	7015/1	60x120	1500
80035/1	60x204	350	8015/1	60x204	1500
5005/1	55x110	500	5020/1	55x110	2000
7005/1	60x120	500	7020/1	60x120	2000
8005/1	60x204	500	8020/1	60x204	2000
5010/1	55x110	1000	5025/1	55x110	2500
7010/1	60x120	1000	7025/1	60x120	2500
8010/1	60x204	1000	8025/1	60x204	2500

Flat flexible duct connector

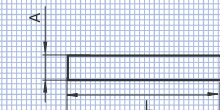
Code	a	B
5153	65	55x110
7173	65	60x120
8183	65	60x204

90° Vertical Elbow

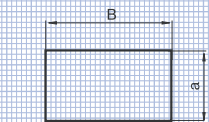
Code	B	d	c
5252	55x110	89	32
7272	60x120	89	32
8282	60x204	89	32

90° Horizontal Elbow

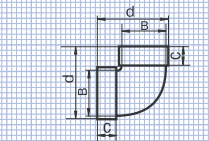
Code	B	d	c
5251	55x110	143	32
7271	60x120	243	32
8281	60x204	237	32



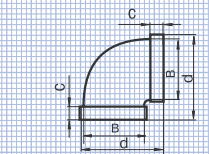
5/10/20



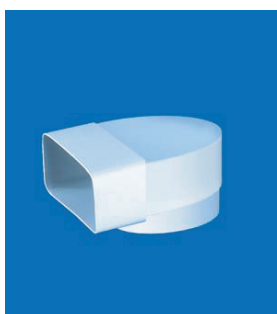
30



10



12



T-joint

Code	B	a	b
535	55x110	143	173
737	60x120	155	185
838	60x204	238	268

Connector

Code	B	a	b
515	55x110	65	30
717	60x120	65	30
818	60x204	65	30

Connector with back valve

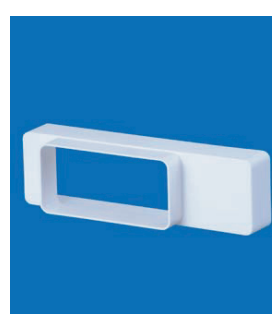
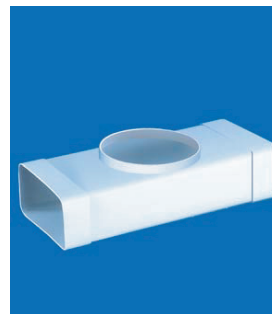
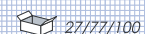
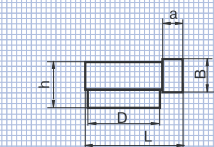
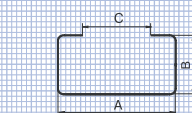
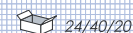
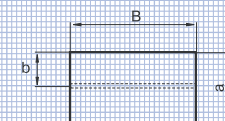
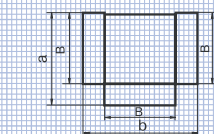
Code	B	a	b
5151	55x110	65	30
7171	60x120	65	30
8181	60x204	65	30

Holder

Code	A	B	C
56	110	55	74
76	120	60	86
86	204	60	169

Flat-to-round elbow

Code	B	D	L	a	h
521	55x110	100	137	30	87
721	60x120	100	140	30	85
821	60x204	100	140	30	85
822	60x204	125	164	30	92
823	60x204	150	188	30	97



T-joint

Code	B	D	L	H
531	55x110	100	170	80
731	60x120	100	170	85
831	60x204	100	170	85
832	60x204	125	195	85
833	60x204	150	220	85

Reducer

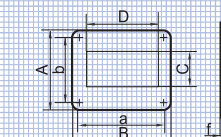
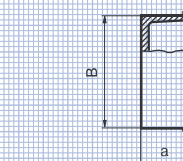
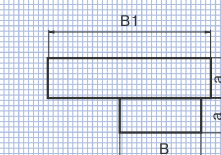
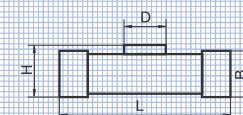
Code	B	B1	a
517	55x110	60x120	30
718	60x120	60x204	30

End cup

Code	B	a
57	52x108	12
77	60x122	12
87	60x204	12

Wall plate

Code	A	B	C	D	a	b
55	154	154	56	111	141	141
75	154	154	61	123	141	141
85	242	154	61	205	229	141



본 자료의 모든 내용에 대한 지식 재산권은 (주)태성에 있으며, 무단 복제 및 사용을 절대 금지합니다.

무단 복제, 배포 등 허락 없는 사용을 금지하는 법률 제5015호 저작권법에 의해 보호받고 있습니다.

사전 동의 없이 무단으로 사용할 경우 법적인 책임을 지게 될 수 있습니다.